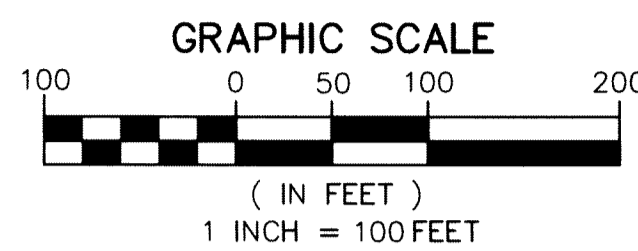


# PANTHER NATIONAL AT AVENIR

21

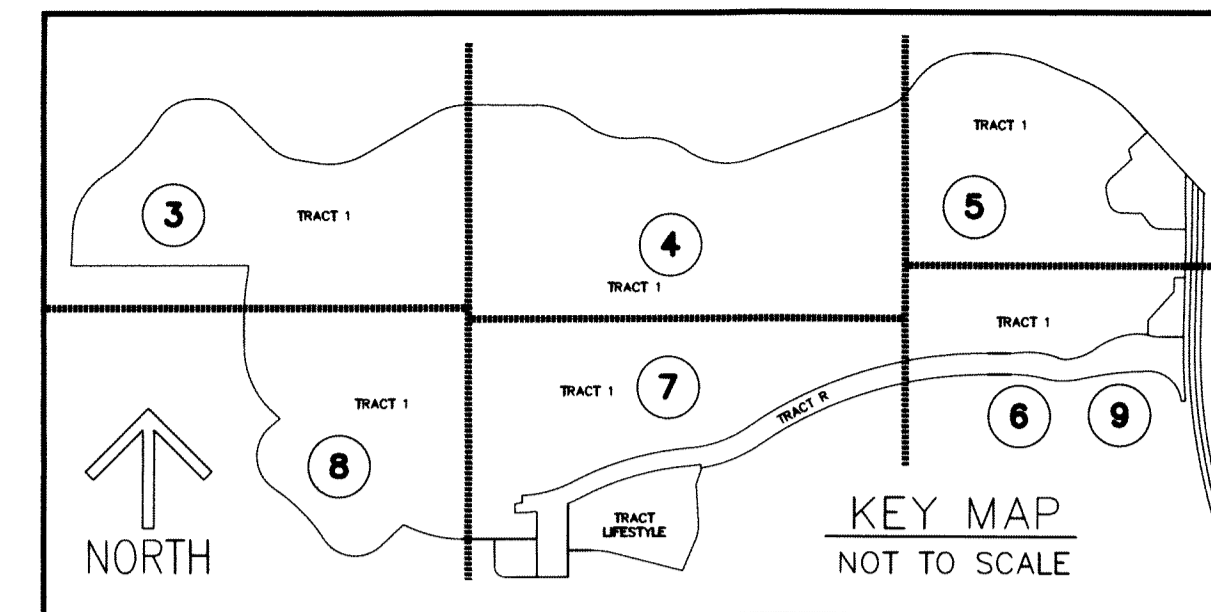
## LEGEND/ABBREVIATIONS

- CL - CENTERLINE
- Δ - DELTA (CENTRAL ANGLE)
- AC - ACRES
- CB - CHORD BEARING
- CD - CHORD DISTANCE
- DE - DRAINAGE EASEMENT
- L - ARC LENGTH
- LAE - LIMITED ACCESS EASEMENT
- LB - LICENSED BUSINESS
- LBE - LANDSCAPE BUFFER EASEMENT
- LSE - LIFT STATION EASEMENT
- ORB - OFFICIAL RECORD BOOK
- PB - PLAT BOOK
- PG - PAGE
- P.P.A.E. - PERPETUAL PUBLIC ACCESS EASEMENT
- R - RADIUS
- (R) - INDICATES RADIAL LINE
- RB - INDICATES RADIAL BEARING
- RBE - ROADWAY BUFFER EASEMENT
- SF - SQUARE FEET
- SUAE - SEACOAST UTILITY AUTHORITY EASEMENT
- UE - UTILITY EASEMENT
- PRM - DENOTES PERMANENT REFERENCE MONUMENT  
5/8" IRON ROD WITH CAP STAMPED  
C&W PRM LB 3591"
- - DENOTES PERMANENT CONTROL POINT
- ✕ - INDICATES 1/4 SECTION CORNER
- ✕ - INDICATES SECTION CORNER



BEING A REPLAT OF A PORTION OF AVENIR, PARCEL "A-1",  
AS RECORDED IN PLAT BOOK 127, PAGES 85 THROUGH 109 OF  
THE PUBLIC RECORDS OF PALM BEACH COUNTY, FLORIDA,  
LYING IN SECTIONS 4, 8, & 9, TOWNSHIP 42 SOUTH, RANGE 41 EAST,  
CITY OF PALM BEACH GARDENS, PALM BEACH COUNTY, FLORIDA.

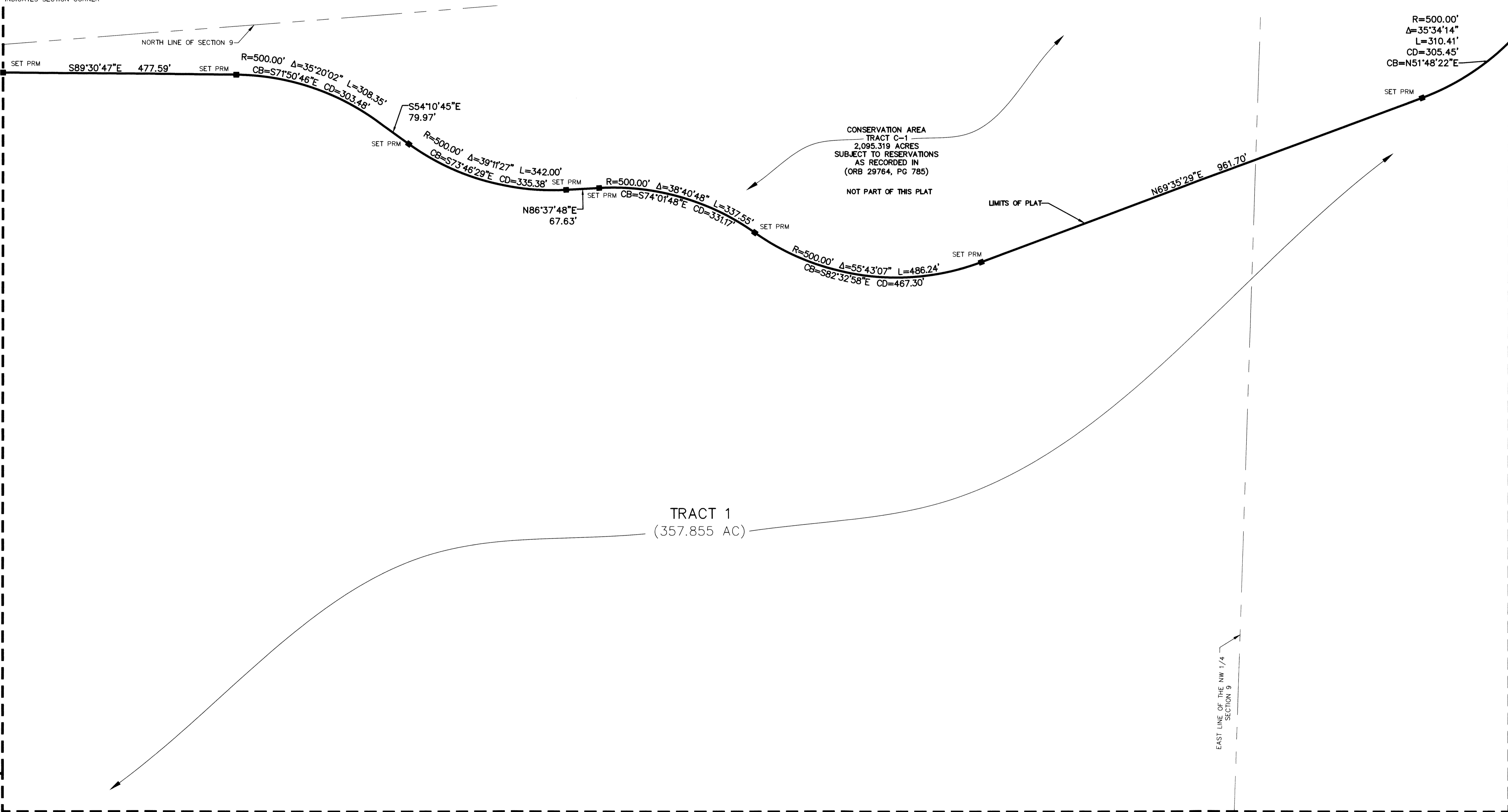
THIS INSTRUMENT PREPARED BY  
RONNIE L. FURNISS  
OF  
**CAULFIELD and WHEELER, INC.**  
SURVEYORS - ENGINEERS - PLANNERS  
7900 GLADES ROAD, SUITE 100  
BOCA RATON, FLORIDA 33434 - (561)392-1991  
CERTIFICATE OF AUTHORIZATION NO. LB3591  
JULY 2022



**SHEET 4 OF 9**

MATCH LINE SHEET 3

MATCH LINE SHEET 5



MATCH LINE SHEET 8

MATCH LINE SHEET 6

MATCH LINE SHEET 7